

VENUE  
RIDER

EXIL GMBH  
HARDSTRASSE 245  
8005 ZÜRICH

INFO@EXIL.CLUB  
+41 43 366 86 84  
WWW.EXIL.CLUB

- 3 VENUE RIDER
- 3 GET IN
- 3 TECHNICIANS
- 3 DIMENSIONS & CONSTRUCTION
- 4 VENUE
- 4 AUDIO
- 7 PROJECTION
- 7 BACKLINE (ON DEMAND)
- 8 LIGHTS
- 9 FLOOR PLAN
- 10 ROOM / NIGHTLINER



# VENUE RIDER

This technical paper has 10 pages.

Last update in April 2024

## GET IN

For artist and crew not earlier than 4 hours before doors.

## TECHNICIANS

If you have further questions, don't hesitate to contact us:

Florian Suter: [sound@exil.cl](mailto:sound@exil.cl) / +41 78 831 24 99

## DIMENSIONS & CONSTRUCTION

Stage Dimensions:	22m <sup>2</sup>
Stage Width Front:	665cm
Stage Depth Left Side:	450cm
Stage Depth Right Side:	230cm
Stage Height:	55cm
Clearance Height Stage:	315cm
Clearance Height Audience:	370cm
Backdrop and Side Curtains:	Black Molton
Front Curtains:	Black Molton
Stage-Risers Platform:	2 x Elements (Bütec) 200cm x 100cm 1 x Element (Bütec) 100cm x 100cm 2 x Elements (Bütec) 50cm x 100cm
Platform Height:	Variable (20/80/100cm)

## VENUE

Backstage:	1 x Floor 16.8m <sup>2</sup> (Below the Stage)
Toilet:	1 x European-Style Toilet
Shower:	1 x Shower with Warm Water
Laundry:	1 x Front-Loading Washer 1 x Front-Loading Dryer
Chairs:	80 x Chairs (Rent: 2 CHF each)
Tables:	Normal and Small

## AUDIO

Please note that according to a strict SWISS LAW regarding the sound level (loudness), no band shall exceed LEQ 100dB(A) over 60 minutes as well as 125dB Peak. Thank you in advance for your cooperation!

PA-System Front:	4 x Kling & Freitag CA1215-9 (Tops) 2 x Kling & Freitag Nomos LT 15" (Subs) (In SW Frame by Kling & Freitag) 2 x Kling & Freitag Nomos LS 15" (Subs) (In SW Frame by Kling & Freitag)
PA-System Rear:	2 x Kling & Freitag CA1215-6 (Club)
PA-System Amps:	1 x Hoellstern 8.4 (Top) 1 x Hoellstern 12.2 (Sub) 1 x RAM Audio Z220 (Rear/Club)
PA-System Controller:	1 x Xilica XP-8080 / 8 In 8 Out
Monitoring:	4 x Sends from Stage Left
Monitor Speakers:	4 x Kling & Freitag CA1215-M 2 x Kling & Freitag CA1201-M
Monitor Amps:	1 x Hoellstern 8.4 (Monitor)
Monitor Controllers:	1 x Xilica XP-8080 / 8 In 8 Out

Front-Of-House Desk:	1 x Yamaha QL5
Front-Of-House Stagebox:	1 x Yamaha Rio 3224 Stagebox
Front-Of-House Cables:	4 x CAT5 / etherCON
Microphones (Wireless):	4 x Sennheiser EW100 G3 Receivers 4 x Sennheiser EW935 Microphones
Microphones (Wired):	1 x AKG D112 1 x Audix D6 1 x Audix D4 2 x Audix D2 1 x Audix i5 2 x Sennheiser E604 2 x Sennheiser E906 1 x Shure BETA 91A 8 x Shure SM57 4 x Shure SM58 4 x Shure BETA58 2 x SE-8 Condensator 1 x Shure SM 94 Condensator 1 x MBNM 440 CL Condensator
DI Boxes:	4 x BSS AR-133 (Active) 4 x Klark Teknik (Active) 1 x DBX Passiv 1 x Omnitronic LH-060 (Passive / Stereo) 2 x ULTRA-DI D1400P (Passive) 2 x Palmer PAN 04 (Passive / Stereo) 1 x Palmer PLI 02 Line Isolator (Stereo)

<b>DJ Mixers:</b>	1 x Pioneer DJM-A9 Rent: CHF 200 (DJM-A9) 1 x Pioneer DJM-900 Nexus 1 x Pioneer DJM-900 SRT 1 x Pioneer XDJ-RX 1 x Allen & Heath Xone:92
<b>CD Player:</b>	3 x Pioneer CDJ-3000 Rent: CHF 150 each (CDJ-3000) 2 x Pioneer CDJ-2000 Nexus 4 x Pioneer CDJ-2000 NXS2 2 x Pioneer CDJ-900
<b>Turntables:</b>	2 x Pioneer PLX1000 1 x Technics SL-1210 MK2 1 x Technics SL-1200 MK2 1 x Technics SL-1210 M5G
<b>Backline Power:</b>	Humm-Free / Separated from the Lights 2 x 3-Point DE/EU 220V 13A (Stage) 1 x Transformer 220V-110V (500W) 1 x Transformer 220V-110V (150W) 1 x Transformer 220V-110V (50W)
<b>Power Boards:</b>	10 x 4-Point CH T13 8 x 3-Point DE/EU "SCHUKO"
<b>Mobile PA's:</b>	HK Audio Lucas Max HK Audio Lucas Elias

## PROJECTION

Projector: 1 x Acer P7605 WUXGA (5000 Ansilumen)  
Rent: CHF 200  
1 x BenQ TH680 FullHD (3000 Ansilumen)  
Rent: CHF 120

Screen: 1 x Screen 400cm x 225cm (stage)  
Rent: CHF 100  
1 x Screen 240cm x 140cm (mobile)  
Rent: CHF 50

Projector (ON-DEMAND): 1 x Overhead Projector  
Rent: CHF 60  
1 x Kodak S-AV 2020 Dia Projector  
Rent: CHF 50

Screen (ON-DEMAND): 1 x Screen 180cm x 240cm  
Rent: CHF 80  
2 x Screen 150cm x 200cm  
Rent: CHF 50

## BACKLINE (ON-DEMAND)

Grand Piano: 1 x Wendl & Lung 218 Concert  
Rent: CHF 550 (incl. Tuning)

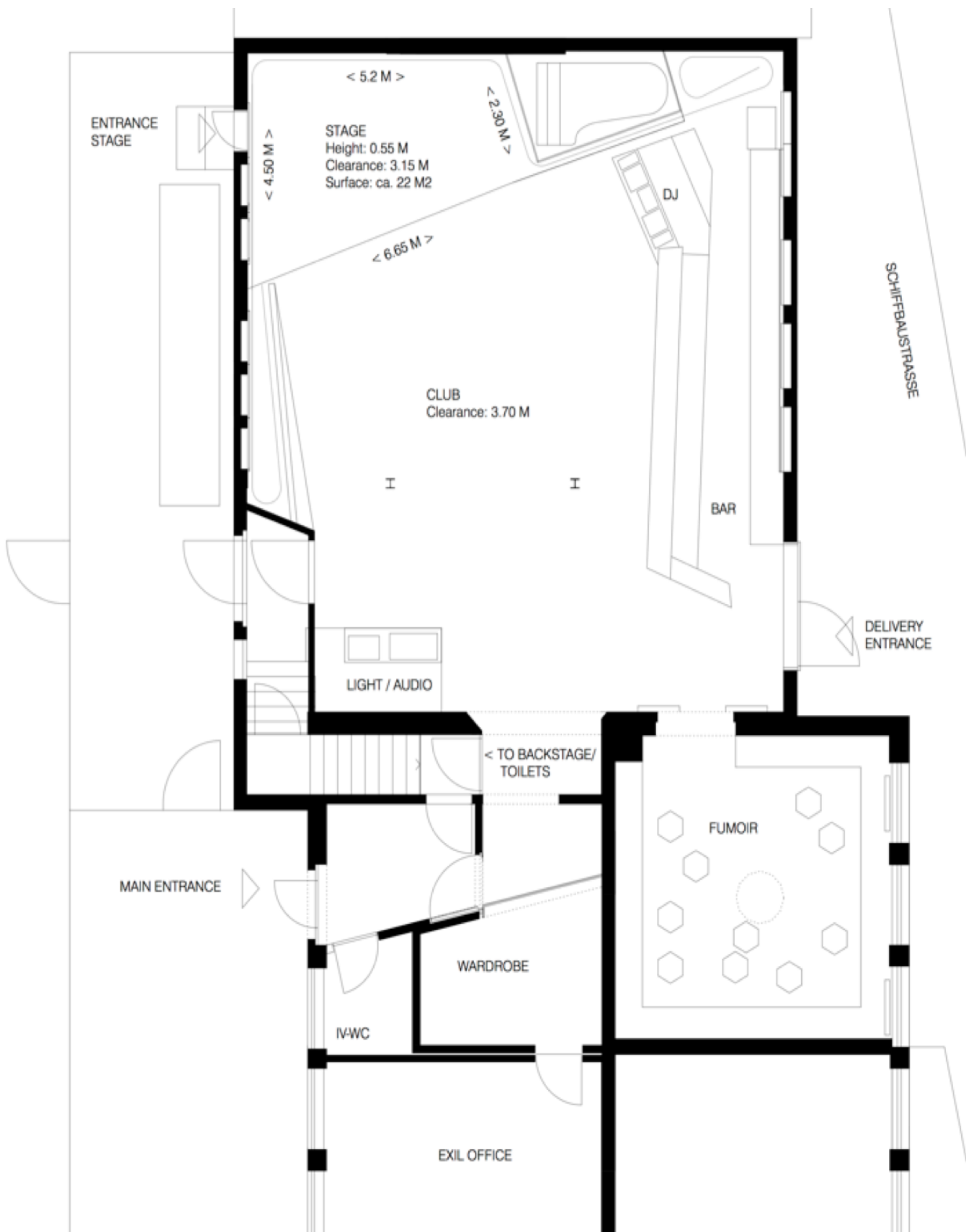
Incl. built-in Microphones: 1 x YAMAHIKO PIANO Pickup  
2 x Audix SCX25A

# LIGHTS

LIGHTS PLAN & DMX PATCHLIST:	Download at <a href="https://exil.club/location">https://exil.club/location</a>
Electric Desk:	MA dot2 Core + F-Wing
House Light:	116 x E27 75W Bulb's
On Stage:	18 x PAR 56 Longnose 36 x Pin Spots 7 x PC 650 2 x Stroboscope 1500W 2 x 2L Blinder 1 x Hazer Smoke-Factory Tour Hazer II 6 x Eurolite LED Z-PAR QLC RGBW 1 x SMG Q-7 Strobo 2 x Eurolite LED ML-46 COB RGBW
Stage Floor mobile:	2 x Eurolite LED ML-46 COB RGBW 8 x Spectral Tour LED M800 4 x PAR 56 Floorspot 1 x SMG Q-2 RGBW 8 x Sunstripe's MKII 1 x Fog Machine
Front:	7 x PC 650 4 x Profiler 650
Moving light:	2 x Eurolite LED TMH-S200 ML Spot 4 x Eurolite LED TMH-S90 ML Spot 12 x Showtec Indigo 150 13 x Showtec XS-1W RGBW Mini Beam
Dancefloor:	4 x Showtec ATC PC 60 RGBW 1 x Mirrorball (75cm) 4 x Lounge Pinspot's 1 x SMG Q-10 Color RGBW 38 x Cameo Q Spot 15 RGBW



# FLOOR PLAN



## ROOM



## NIGHTLINER



Power for Nightliner:

CEE32, CEE16, Schuko 16A, T13 16A